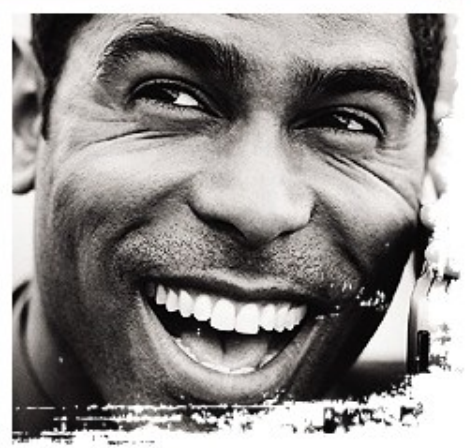
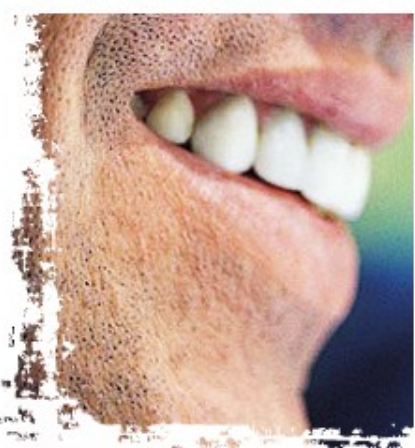
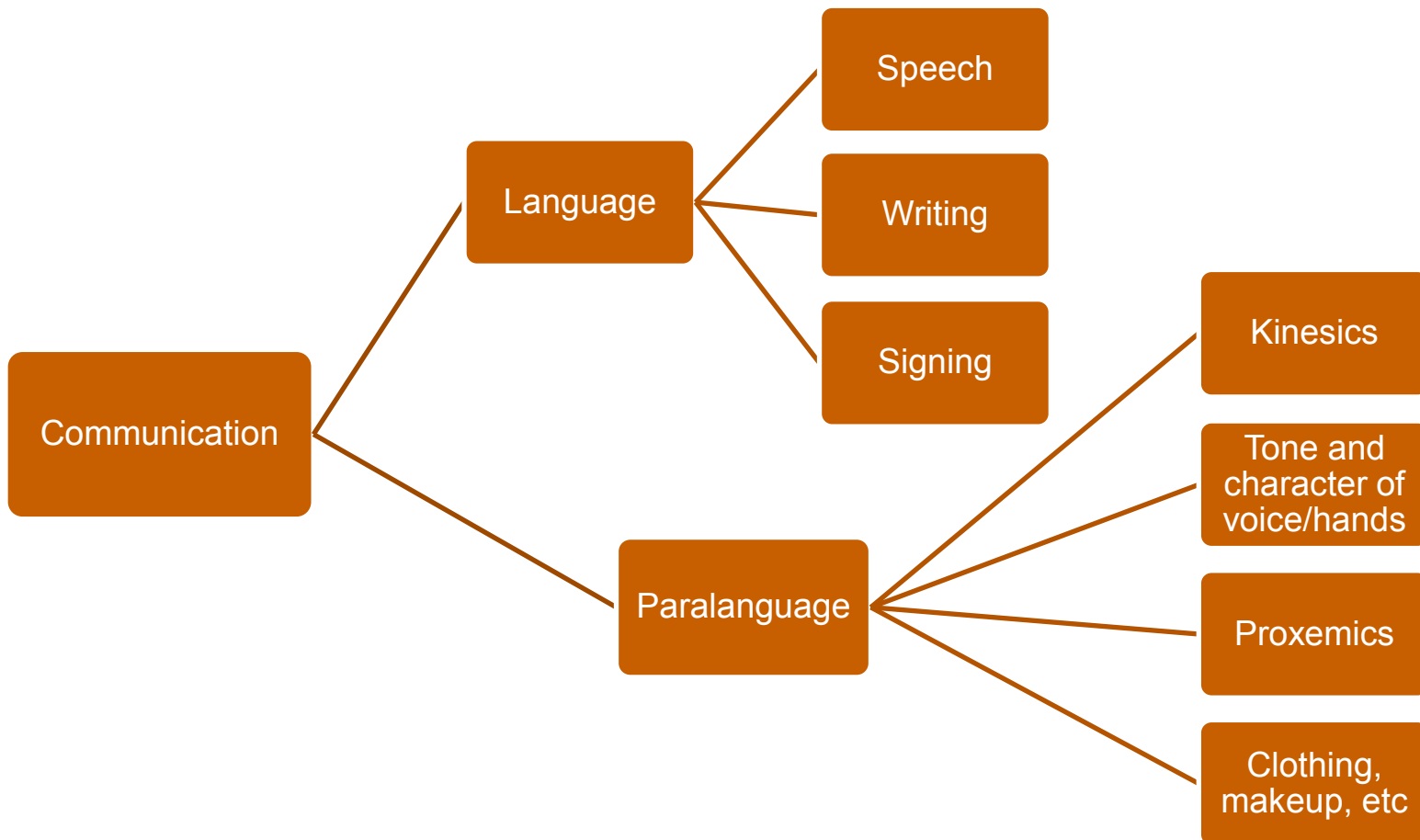


Communication and Culture
Deaf Services Program - SCDMH



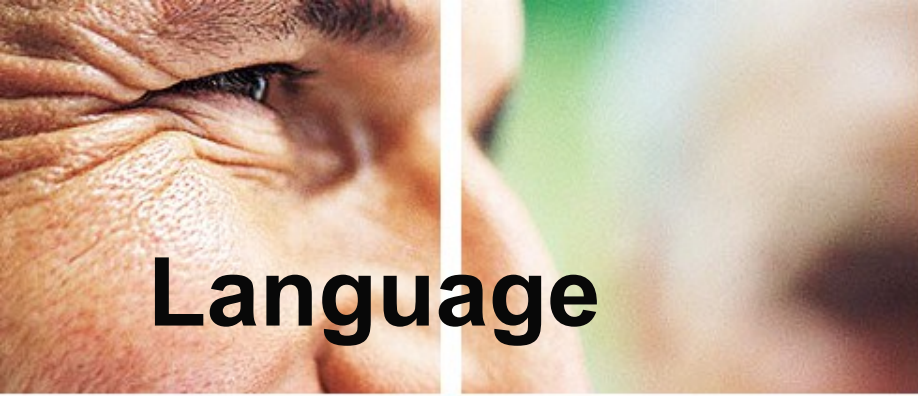
What is Communication?





What is Culture?

Perspective	Definition
Topical:	Culture consists of everything on a list of topics, or categories, such as social organization, religion, or economy
Historical:	Culture is social heritage, or tradition, that is passed on to future generations
Behavioral:	Culture is shared, learned human behavior, a way of life
Normative:	Culture is ideals, values, or rules for living
Functional:	Culture is the way humans solve problems of adapting to the environment or living together
Mental:	Culture is a complex of ideas, or learned habits, that inhibit impulses and distinguish people from animals
Structural:	Culture consists of patterned and interrelated ideas, symbols, or behaviors
Symbolic:	Culture is based on arbitrarily assigned meanings that are shared by a society



- Choice of language
 - **Dialect**
 - **Accent**
 - **Pidgin/Creole**
- Speech
- Signing
- Writing



Paralanguage

- Kinesics
 - **Body Language**
- Tone and character of voice/hands
 - **Register**
- Proxemics
 - **Distance between speaker**
- Clothing, makeup, etc



Register

Meaning per morpheme

Number of morphemes

Number of users

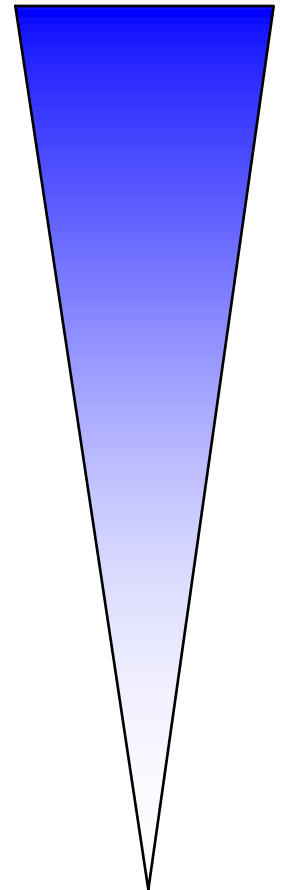
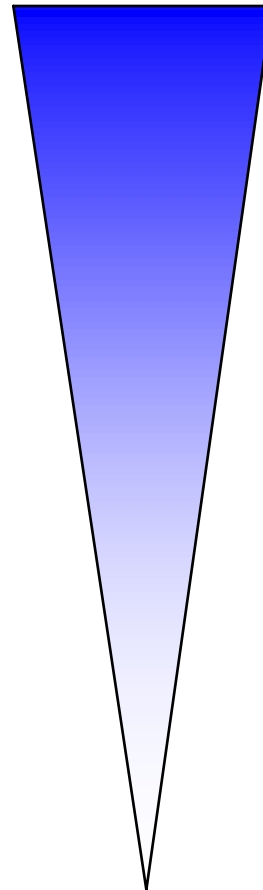
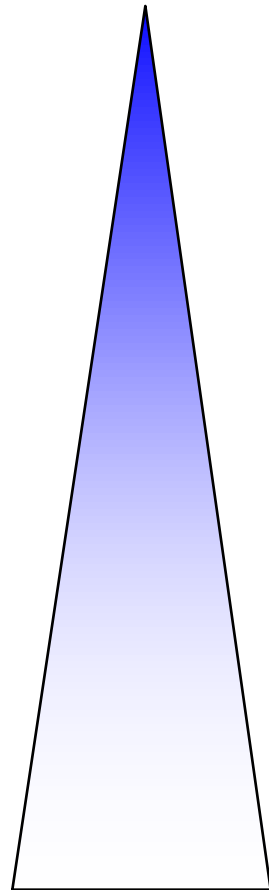
Frozen

Formal

Consultative

Casual

Intimate





High/Low Context Cultures

High-context cultures

- Long-lasting relationships
- Exploiting context
- Spoken agreements
- Insiders and outsiders clearly distinguished
- Cultural patterns ingrained, slow change

Low-context cultures

- Shorter relationships
- Less dependent on context
- Written agreements
- Insiders and outsiders less clearly distinguished
- Cultural patterns change faster



High and Low Context Cultures

Factors / Dimensions

High Context

Low Context

Lawyers

Less important

Very important

A person's word

Is his or her bond

Get it in writing

Responsibility for organizational error

Taken by top level

Pushed to lowest level

Negotiations

Lengthy

Proceed quickly



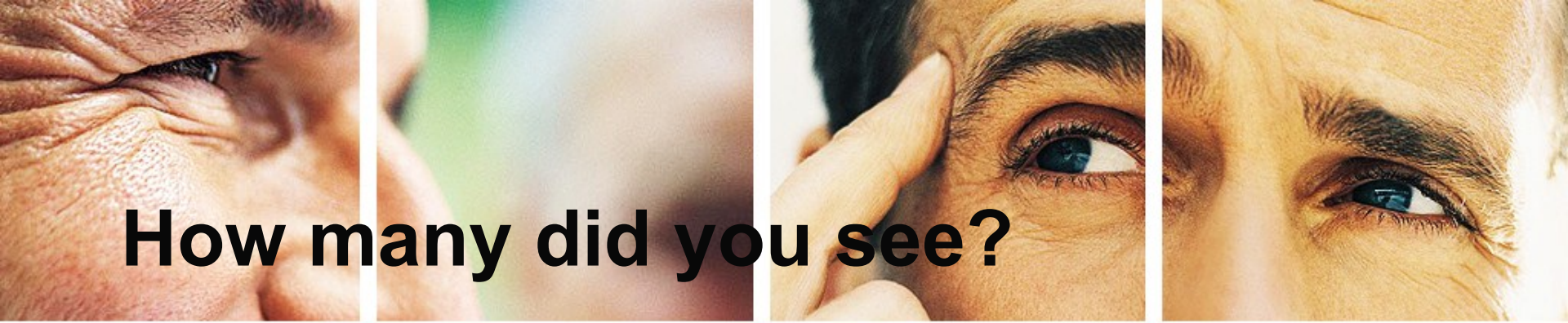
Perception

- Perception is *selective*.
- Perceptual patterns are *learned*.
- Perception is *culturally determined*.
- Perception tends to remain *constant*.
- We therefore see things that do not exist, and do not see things that do exist.
- We perceive what we expect to perceive.



Count the F's

**FINISHED FILES ARE THE RESULT OF YEARS
OF SCIENTIFIC STUDY COMBINED WITH
THE EXPERIENCE OF YEARS**



How many did you see?

Native speakers of English often see only three F's while non-native speakers see six. Native speakers tend to overlook the F's in the word "of".



Stereotypes

- Consciously held.
- Descriptive rather than evaluative.
- Accurate.
- The first best guess.
- Modified



References

- Hall, E. T. (1976). *Beyond Culture*. Garden City, NY: Anchor Press/Doubleday and Company.
- L. A. Samovar and R.E. Porter, eds. (1976). *Intercultural Communication: A Reader*. Belmont, CA: Wadsworth Publishing Company.
- Adler, N.J. (1991). *International Dimensions of Organizational Behavior (2nd ed.)*. Boston, MA: PWS-KENT Publishing Company. pp. 63-91.
- Bodley, J. (1994). *Cultural Anthropology: Tribes, States, and the Global System*. Mountain View, California: Mayfield Publishing Co.
- Mezzich, J. E. (1996). *Culture and psychiatric diagnosis : a DSM-IV perspective (1st ed.)*. Washington, DC: American Psychiatric Press.